



Viale Beatrice d'Este mq 160



FEATURES:

Property type	Residential
Brokerage	Sell
Surface (sqm)	160
N. local	4
Bedrooms	3
Bathrooms	2
Energy rating	E
Floor	7
Balcony/Terrace	1

DESCRIPTION:

Viale Beatrice d'Este mq 160. A few steps from MM3 Porta Romana and Bocconi University, in an elegant 1930s building with concierge, 160 sqm apartment **on the top 7th floor**. Entrance, double living room, kitchen, 2 double bedrooms, single bedroom, 2 bathrooms, **balcony**. To be restructured. **Request €1,090,000**. Possibility of space of 70 m2 in the basement to be used as a hobby room €80,000. Energy class E.

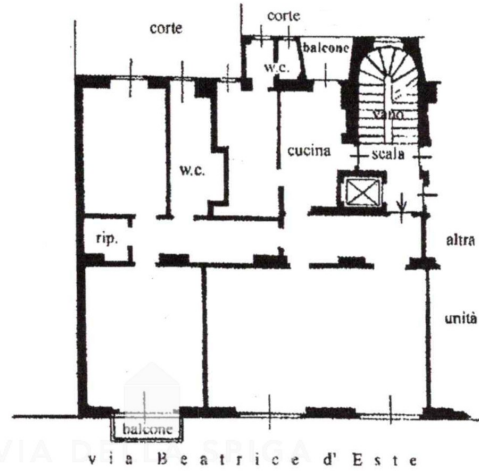


Frame the QR CODE to view the property on our website



PLANIMETRY 1:

PIANO SETTIMO
h. 330



PIANO INTERRATO
h. 280

