



Moscova Area



FEATURES:

Property type	Residential
Brokerage	Rent
Surface (sqm)	80
N. local	2
Bedrooms	1
Bathrooms	1
Energy rating	F
Floor	14
Balcony/Terrace	terrace

DESCRIPTION:

Moscova Area— One-Bedroom Apartment on the 14th Floor with Panoramic Skyline View

In a **modern building** with elegant common areas and **full-day concierge service**, a stunning one-bedroom apartment on the **14th floor**, where the city of Milan reveals itself in all its beauty through a view of the skyline of extraordinary evocative power. Approx. **80 sqm**.

The apartment opens onto an entrance hall with a **hallway and walk-in wardrobe closet**, leading into the heart of the residence. **Spacious open-plan living area with integrated kitchen**, a space of great character, made particularly striking by the **dual angular exposure** that offers unique and ever-changing views over the city. From the living area, direct access leads to the **covered terrace, furnished with table and chairs**. A natural extension of the living space and the perfect setting in which to enjoy the Milanese skyline in every season.

Bedroom, generously proportioned and filled with natural light, is served by a **private designer bathroom**, completing a layout that is at once essential and refined. Windows throughout all rooms ensure abundant and continuous natural light over the course of the day.

The apartment is offered **fully furnished**, and is equipped with a **ducted air conditioning system** and **centralised heating**. A **private cellar** completes the property.



Contract 12/18 months or 4+4 years. Annual rent € 34,000 (€ 2,800 per month) + annual charges approx. € 2,700 (approx. € 230 per month). Energy class F.

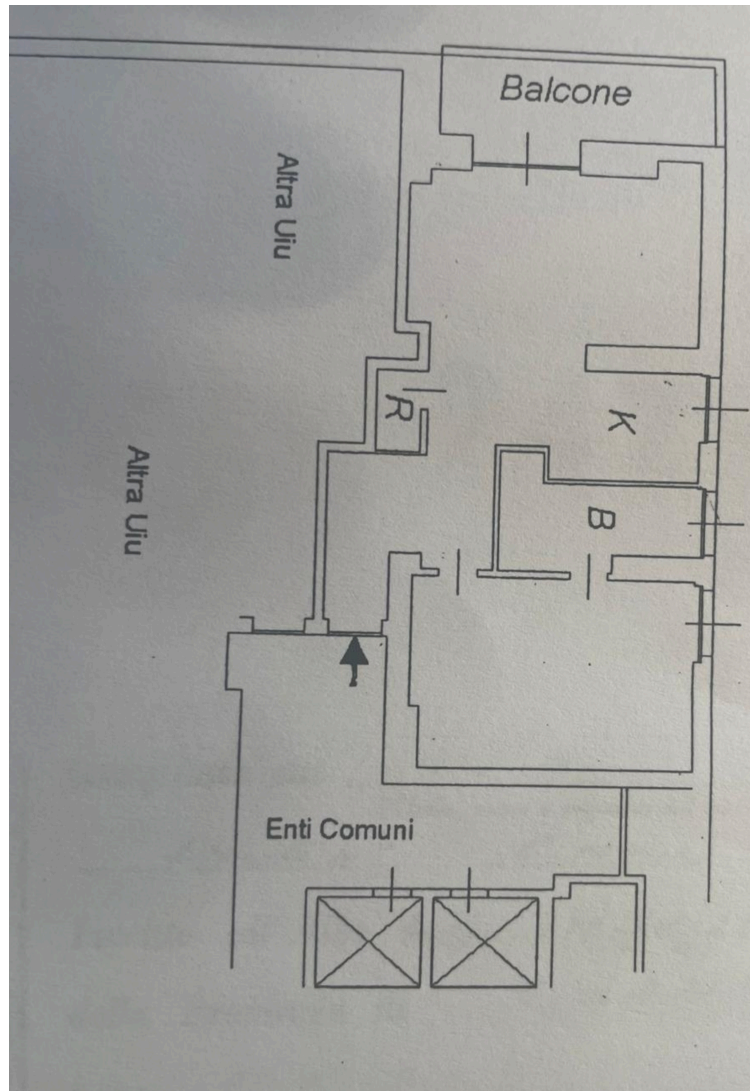
Piazzale Biancamano occupies a position of absolute privilege within the urban fabric of Milan, in that distinguished part of the city that converses with the Arena Civica, Parco Sempione and the vibrant elegance of Via Moscova and the Brera neighbourhood. A refined residential setting that offers in equal measure the tranquillity of a prestigious address and the full centrality of the metropolis. The area is excellently connected via the MM2 Moscova and MM2 Lanza metro stations, as well as MM1 Cairoli, all within a short walk from the property.



Frame the QR CODE to view the property on our website



PLANIMETRY 1:





PLANIMETRY 2:

